



Harrogate and District 
NHS Foundation Trust

Community Beacons

Jackie Rowbottom

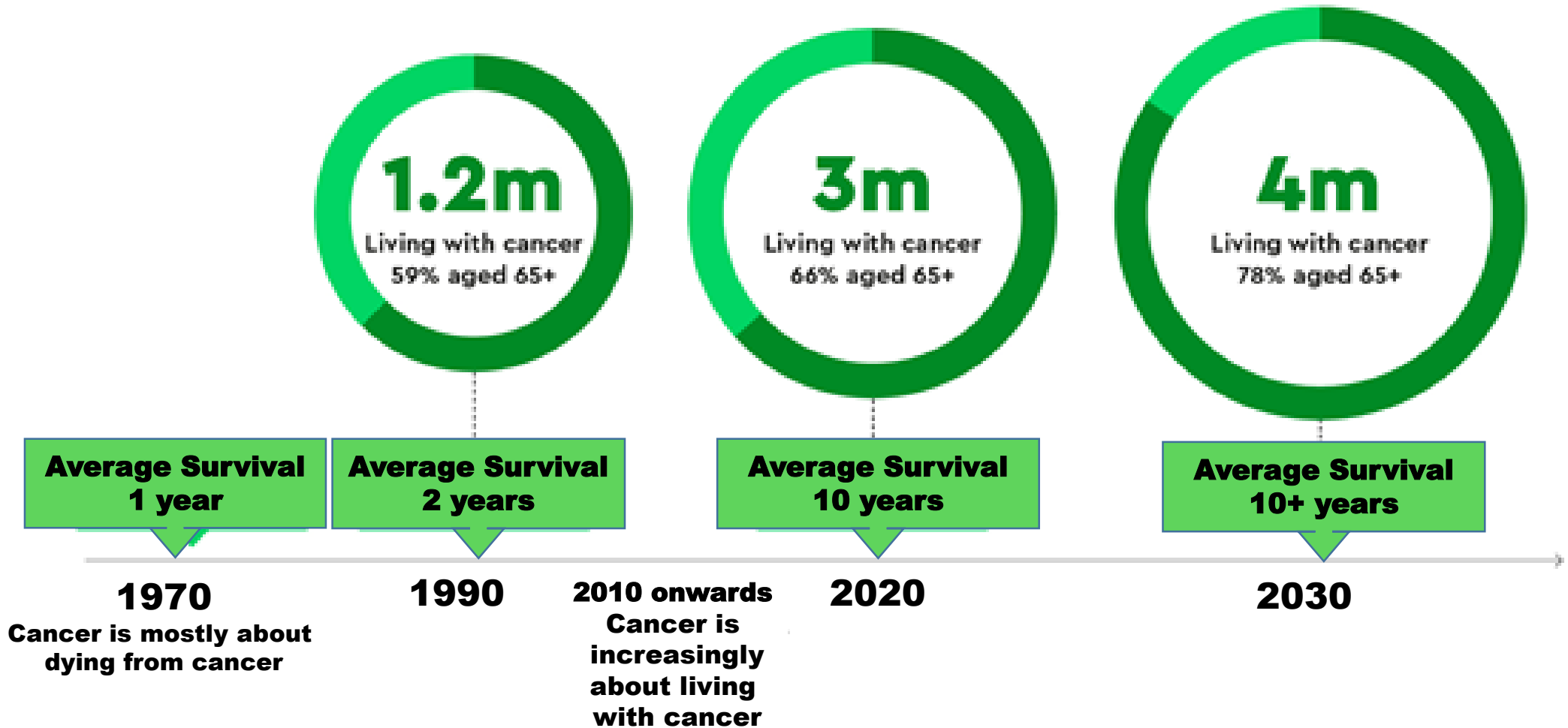
Macmillan Information and Support Specialist

MACMILLAN
CANCER SUPPORT



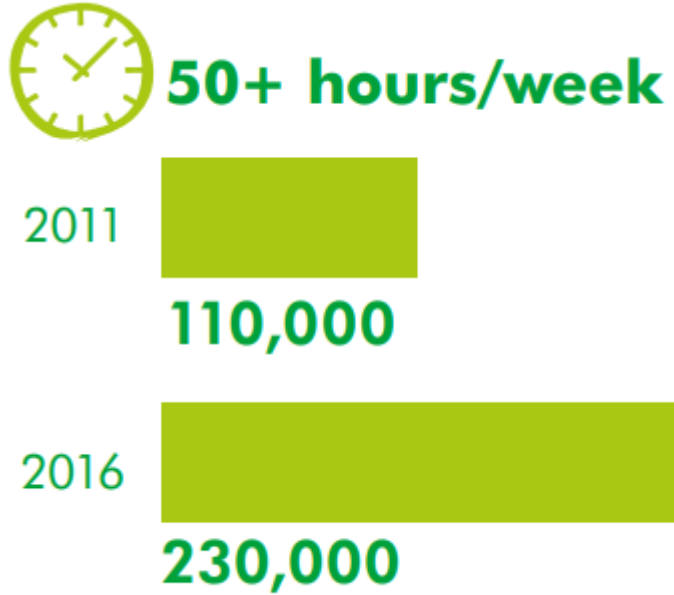
Harrogate and District
Cancer Services

The changing story of cancer

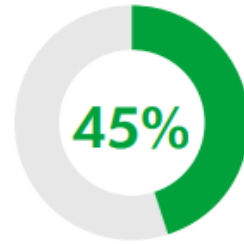


Cancer Carers: **UNDER PRESSURE**

Estimated number of cancer carers across the UK



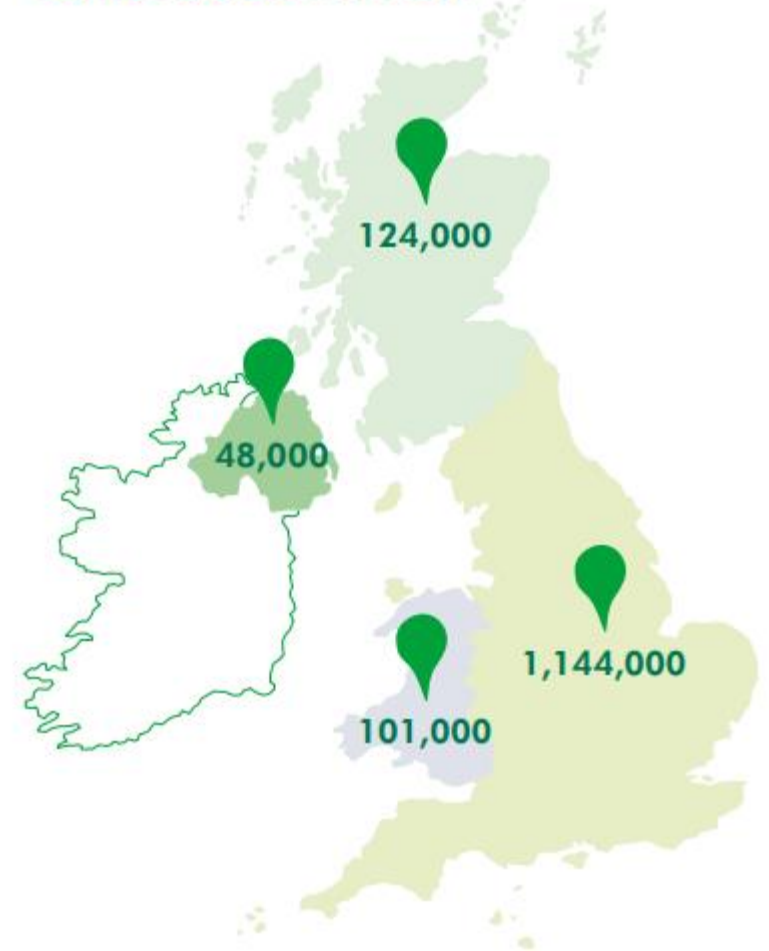
of cancer carers experience **stress**



of cancer carers experience **anxiety**



of cancer carers experience **depression**





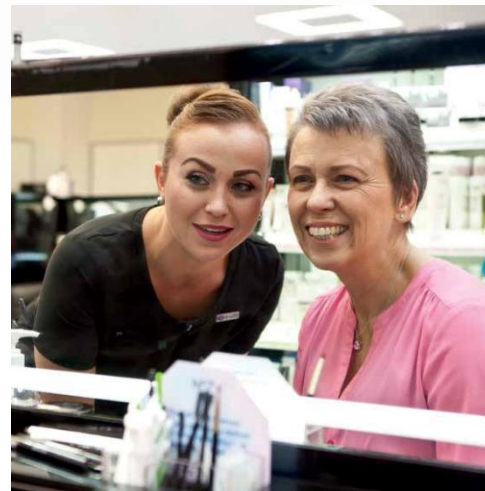
Health and Wellbeing Services

- Benefits and Welfare Advisor
- Complementary Therapy
- Dietician
- Clinical Psychologists



Health and Wellbeing Services

- Information and support
- Personalised exercise programme via Active Against Cancer
- Make up and skincare sessions via Look Good Feel Better
- Wig fitting and hair loss support service



Community Beacons

Disadvantages of Hospital Based Support

- May involve increased travel
- Person may prefer to be in “non-cancer” setting
- Clinical setting may trigger bad memories and stress
- Limited in what we can offer and to whom



Advantages of Community Support

- May be more local to the person in need
- More relaxed environment and setting
- Increased openness and accessibility
- Huge variety of support and activities available, often not provided by us
- Joining local community helps reduce loneliness and isolation



Community Beacons



Case Study

- Older man with cancer diagnosis
- Wife has dementia, he cares for her
- He has a lot of worries:
- Who will care for his wife while he has treatment?
- How will they pay for heating and bills?
- Who will look after pets and garden if he struggles with fatigue?
- Help with shopping and cooking meals?

carers'
resource
you care for them, we care for you

HELP
Harrogate Easier Living Project

Dementia
Forward
Care and Support for Life

Harrogate
Neighbours

Warm & Well
in North Yorkshire

MEALS ON
WHEELS
deliver a difference



Community Beacons

- Joined up care and support
- Empowerment
- Providing information for access to personalised support.



Any questions?

